



Look inside...with video! Turn ANY borescope into a portable videoscope in just seconds!

Made in USA



Connects to ANY Hawkeye® Rigid or Flexible Borescope

Each Luxxor® Portable Video Camera Kit contains:

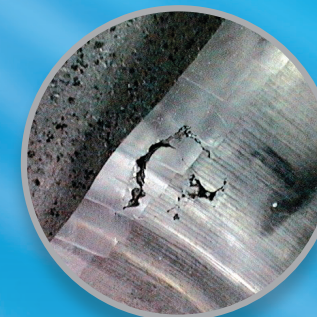
- Luxxor® Portable Camera
- Portable Video Monitor
- Video Cables
- SD Memory Card
- Tripod
- AC Power Adaptor
- Rugged Hawkeye® Pro Carrying Case



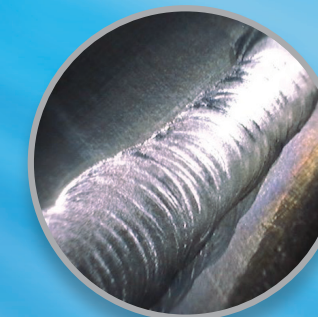
Completely Portable Visual Inspection Inside...



Machined Parts



Castings



Welded Parts

When connected to any Hawkeye® Rigid or Flexible Borescope, and most other brands, the new Luxxor® Portable Video Camera delivers sharp, bright video and still images. Inspection images can be viewed "live," and captured, stored, and documented. You can view video on our Portable Video Monitor, or any computer or benchtop video monitor.

Luxxor Portable Video Camera

Product	Model#
Luxxor Portable Video Camera*	LPC
Luxxor Portable Video Camera Kit**	LPC-PVM

Viewing Options

Portable Video Monitor***	PVM-DV
USB2 Image Capture Device & Software	VC-USB2
Sony® Professional Video Monitor	SVM-15

Accessories

Video Cable (LPC to PVM)	DV-MCBL
Video Cable (LPC to ext. monitor, VC-USB2, or, RCA)	DV-YCBL
Hawkeye® LED Light	HAWKEYE LED
Tripod (Attaches to PVM)	DV-Tripod
BNC Adaptor (BNC input to RCA output from DV-YCBL adaptor)	DV-BNC
Aluminum Carrying Case (w/die cut foam insert)	PCC

* Includes Luxxor Portable Camera & Video Cable DV-YCBL (RCA output)

** Includes Luxxor Portable Camera, Portable Video Monitor, Hawkeye® LED Light, PVM Video Cable, #DV-MCBL Video Cable, Video Cable for Additional Monitor, DV-YCBL, Tripod Stand, SD Memory Card, & PCC Carrying Case

*** Includes Portable Video Monitor, LPC Video Cable #DV-MCBL, Tripod Stand, SD Memory Card

3 Viewing Options:



Portable Video Monitor:
Portable video monitor with image capture



Computer Ready:
USB capture device with software



Sony® Professional Video Monitor:
15" LCD monitor

Luxxor® Portable Video Camera Specifications

Image Sensor.....	1/4" Color CCD
Lens	Built in 25 mm borescope coupler lens
Mount.....	Quick release, ball bearing mount couples 32 mm borescope eyecup securely to the camera
Video Format	NTSC
Resolution	768 x 494 pixels (520 TV lines)
S/N Ratio.....	48DB + Min.
Illumination.....	0.2 Lux at F/1.2 (without borescope)
Shutter Speed	1/50 - 1/100,000
Working Temperature.....	-10 to 45° C
Power Supply.....	5 - 12 V DC, 80 mA
Output.....	Standard cable is RCA composite video, or, 12 PinHi-ROSE with portable video monitor
Length	160 mm
Handle Diameter	32 mm
Coupler Lens Diameter	44.5 mm



Made in USA