



BLUE  
PRECISION BORESCOPIES

**Hawkeye® Blue Swing Prism Borescopes** have a tiny prism at the tip that pivots, or "swings," to vary the direction-of-view from 16° to 118°. A ring on the borescope body controls the prism direction. The field-of-view is 45°, so the borescope effectively sees from -7° to 133°.

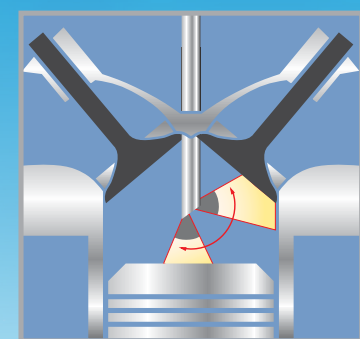
Another ring focuses the borescope, and a third rotates the borescope tube over more than 360°, sideways in any direction, without turning the body.

Diesel engine mechanics use Swing Prism Borescopes to examine cylinders, pistons, and valves. Aircraft engine mechanics use the Swing Prism to locate and investigate FOD (foreign object damage and debris) in jet engines.



**Direction-of-View Ring**  
From 16° to 118°

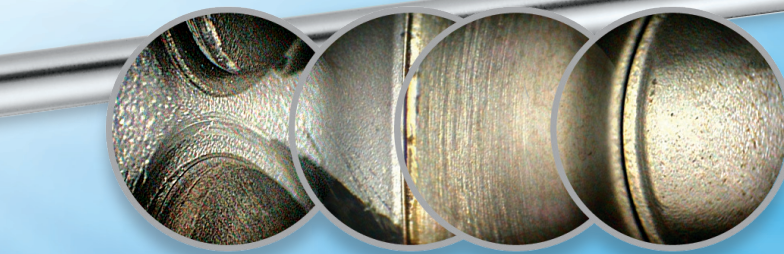
**ACMI-Standard Light Post**  
Accepts any Hawkeye® or Luxxor® Light



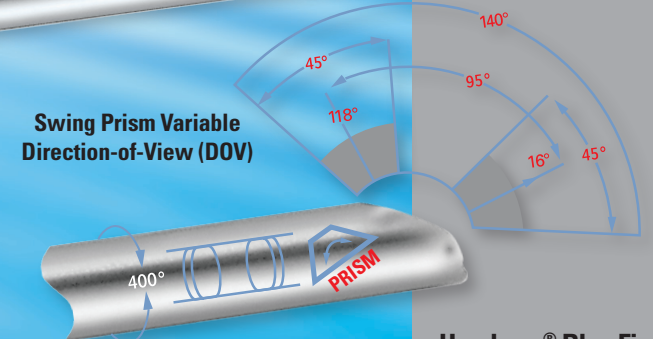
**Hawkeye® Blue Rigid Swing Prism Borescopes**

Diameter	Length	DOV	FOV	Model #	Price
○ .237" (6.0 mm)	9.60" (245 mm)	16° to 118°	45°	HBS 060 245 045	\$5,495
○ .237" (6.0 mm)	17.91" (455 mm)	16° to 118°	45°	HBS 060 455 045	\$5,995
○ .315" (8.0 mm)	12.80" (325 mm)	16° to 118°	45°	HBS 080 325 045	\$5,495
○ .355" (9.0 mm)	23.80" (605 mm)	16° to 118°	45°	HBS 090 605 045	\$5,995
○ .355" (9.0 mm)	31.69" (805 mm)	16° to 118°	45°	HBS 090 805 045	\$6,195

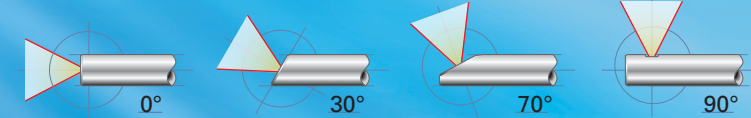
Other lengths available by special order.



Swing Prism Scan: Valves Cylinder Head Cylinder Wall Piston in Cylinder



**View Rotation Ring**  
Rotates view more than 360°, independent of body



Fixed Prism Directions-of-View (DOV's)

**Fixed Prism**

**Independent Focusing Ring**  
Easy video & still photography



Video and lighting sold separately. See pages 12 - 13 and 28 - 29.

**Hawkeye® Blue Fixed Prism Borescopes**

Diameter	Length	DOV	FOV	Model #	Price
○ .110" (2.8 mm)	4.72" (120 mm)	30°	90°	HBR 028 122 090	\$3,395
○ .110" (2.8 mm)	7.28" (185 mm)	90°	55°	HBR 028 187 055	\$3,395
○ .110" (2.8 mm)	12.36" (314 mm)	90°	55°	HBR 028 317 055	\$3,895
○ .157" (4.0 mm)	4.72" (120 mm)	70°	55°	HBR 040 125 055	\$3,395
○ .157" (4.0 mm)	6.89" (175 mm)	90°	55°	HBR 040 177 055	\$3,395
○ .157" (4.0 mm)	9.65" (245 mm)	30°	55°	HBR 040 242 055	\$3,695
○ .157" (4.0 mm)	11.81" (300 mm)	90°	55°	HBR 040 307 055	\$3,695
○ .157" (4.0 mm)	14.57" (370 mm)	70°	55°	HBR 040 375 055	\$3,695
○ .157" (4.0 mm)	16.73" (425 mm)	90°	55°	HBR 040 427 055	\$3,795
○ .228" (5.8 mm)	8.07" (205 mm)	90°	65°	HBR 058 217 065	\$3,395
○ .228" (5.8 mm)	13.58" (345 mm)	70°	65°	HBR 058 355 065	\$3,795
○ .228" (5.8 mm)	13.58" (345 mm)	90°	65°	HBR 058 357 065	\$3,795
○ .228" (5.8 mm)	19.09" (485 mm)	90°	65°	HBR 058 497 065	\$3,895
○ .228" (5.8 mm)	24.6" (625 mm)	90°	65°	HBR 058 627 065	\$3,895
○ .315" (8.0 mm)	12.79" (325 mm)	90°	65°	HBR 080 327 065	\$3,395
○ .315" (8.0 mm)	28.54" (725 mm)	90°	65°	HBR 080 727 065	\$3,895
○ .315" (8.0 mm)	32.91" (836 mm)	0°	100°	HBR 080 840 100	\$3,895

Other lengths available by special order.

**Hawkeye® Blue Fixed Prism Borescopes** offer directions-of-view of 0°, 30°, 70°, and 90°. They have medium to wide fields-of-view, ranging from 55° to 100°.

Use a Hawkeye Blue Fixed Prism Borescope for particularly large, dark spaces. Illumination and imaging channels are independent on Hawkeye Blue Rigid Borescopes, increasing image clarity and contrast.

In comparison, when borescopes with mirror tubes are used to inspect large, dark areas, the illuminating light and the image can intermix, lowering clarity and contrast if the mirror is not clean.

We deliver each Hawkeye Blue Swing and Fixed Prism Borescope in a lockable, fitted carrying case, for security and protection.

Made in Germany